

LOCIS 7.0

We Have Begun Beta Testing...
Watch For Details

“The new LOCIS 7.0 has a lot of great features. The software remembers your last transaction so that you don't have to keep going back through the menus. There is also a direct deposit option to put your paycheck into two different accounts. We now have 529/1700 customers on direct debit. We can process 529 customers in less than 5 minutes! You need to try it out!”

-Tracy L. Holmes
Village of Millstadt

“I am writing to let you know a little about Version 7. Having been on version 5 going straight to 7 I thought it might be a little overwhelming. Thanks to the great staff of LOCIS, especially Greg and Kathy, they have made this transition tolerable. Having only had about 5 hours of initial training by Rick, who also did a good job, I was told anytime I had a problem to call immediately. I wasn't told until 2 days later, that I was one of the first one to be put on Version 7. I think I should feel honored and somehow, this has made me feel like part of the staff. When I've called Greg with a problem, he wants to know from me how I would like to see it done or changed. I really like this about the LOCIS staff, because it does make me feel like part of your family and not just an everyday user.

The menu itself we like better being on the left side rather than at the top. I will admit I was having a little trouble finding some of the procedures that I do (I do Utility Billing only) and then I was told about favorites. Once you find something that you will be using on a regular basis just mark them your favorite and you'll never be looking for them again. This is a new feature for me that I really like! I also like the fact that once you go to account master and pull up an account everything you need to know, is right there on the screen and easily accessible. Don't get me wrong, I know I don't know everything yet, but I do know that what I have learned with Version 7 I am impressed with. This version is more updated and advanced than the Version 5 that we were using and I'm looking forward to learning more of the features that I have yet to experience.

The last time I called Greg, he actually sounded a little disappointed that I hadn't called him in awhile with a problem. Not that I don't like talking to Greg, but with on the job training and the training I received from the LOCIS staff, you may not be hearing from me much!!! I guess that means we're both doing a great job!”

-Cindy Vame
Sesser Water Department

Considering Upgrading Your PC or Operating System?

Things you should consider before hand...

The LOCIS system presently does **NOT** Support:

- Microsoft Vista Home (XP Home)
- Microsoft Vista Home Premium (XP Media Center)
- Any Microsoft Vista 64 bit version
or
- Microsoft XP 64 bit version

The LOCIS System **DOES** run on:

- Microsoft Vista Business (XP Pro)
- Microsoft Business Ultimate (XP Pro with Media Center)
and
- Microsoft XP (*will only be available until the end of 2008*)
- Microsoft Vista with downgrade able XP (*available OEM*)

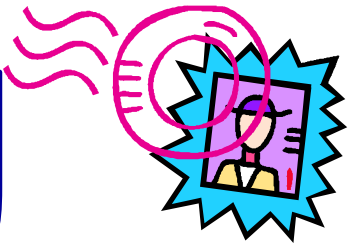
Other Considerations that may need to be made for Vista Compatibility

- 3rd Party Handhelds
- LOCIS Psion/NTSCOM products will run on Microsoft Vista 32 bit version but Windows XP is still preferred
- 3rd Party Bill Print
- Other hardware / software applications presently in use

Microsoft Vista may not be compatible with certain hardware including printers, monitors, and other peripherals.

If you have any questions regarding a new purchase with your Operating System or PC, please feel free to contact the LOCIS office at your convenience.

The Mail Bag



General Ledger

Question: I added a new general ledger account number and need to enter a budget dollar amount. Where do I go to do that?

Answer: Under General Ledger, Month/Year End Process and then Budget/Appropriation Entry (UMWMWIN).

Question: I ran the Month Year End Closing (GMEWIN) program to close a month and had an out of balance condition in one of my funds. What would you recommend that I do first to diagnose the problem.

Answer: Run the Monthly Activity Report (GARWIN) program. Run this program to print on the terminal screen and to print summary. When you tab to display totals you will be able to: 1) See if the Debits/Credits are equal. They should be. 2) Check to see if the Gain/Loss has been posted. If it was posted, the amount on the bottom line titled "Current Month Gain/Loss" will be equal to the amount on the line titled "Gain/Loss" under the column titled "Net Change" and 3) See if Assets = Liabilities plus or minus Capital. They should be equal, and if Revenue = Expense plus/minus Gain/Loss. They should be equal.

Utility Billing

Question: I was running the consumption report (UCR) for month 08 and year 08 but I keep getting zeros and I did do a bill run on August 1st. What am I doing wrong?

Answer: You are using the bill mail date of August 1st but the report reads

the service dates and they were 7/02/08 to 7/31/08. So, just run the report for 07/08 and you'll get the results you expect.

Question: I need a report, in Utility Billing, to list what customers are on a specific service and rate code?

Answer: The report is Account Master List (UAL). The steps are as follows: List (A)ctive, (C)losed, (I)nactive, or A(L)

Report by service

Report what service

Report what rate

All or Range

Continue Y/N/E

Accounts Payable

Question: When processing manual checks through the Accounts Payable system, can a zero be entered/recorded as the first digit or digits of the check number?

Answer: Yes

Payroll

Question: In payroll, I have been asked to provide all of the earning/deduction amounts for an employee for calendar year 2007. What program would I run that would provide this information.

Answer: The Check History List (PCL) program will allow you to print all the checks for one employee issued between January 1 and December 31, 2007, and will provide grand totals for each of the earning/deduction amounts.